



Case Study 1B: News and media examples

Copyright note:

The three media items in this document have been reproduced using content sourced from the North Queensland Cowboys NRL club website and the Fox Sports news website.

Copyright for these news and media items, including all images, remain with their original owners/publishers, as outlined on the following pages.

This document is intended for educational purposes only and is not to be reproduced or published in any form outside of your university's restricted access servers.



COWBOYS

Paul Green's memorial details

Cowboys.com.au

Tue 30 Aug 2022, 08:00 AM

North Queensland Toyota Cowboys members and fans will be able to watch today's funeral and memorial of Paul Green on our website.

The live stream, which incorporates the funeral service between 11am and 12.30pm and the wake memorial tribute from 1pm to 2pm, can be viewed [here](#).

Both the service and wake tribute are being held at Wynnum Manly Leagues Club on the grounds of BMD Kougari Oval.

In memory of Paul Green, his family has asked that people support the work of the Australian Sports Brain Bank at Royal Prince Alfred Hospital.

They hope that your donation will generate an understanding of brain and mental health and save lives in the future.

Those wanting to support the pioneering work of the Australian Sports Brain Bank can [donate here](#).

EVERYMIND NOTE:

This article has been reproduced using content from the North Queensland Cowboys NRL club website, last accessed 30/06/2025.

The original article can be viewed here:

<https://www.cowboys.com.au/news/2022/08/30/paul-greens-memorial-details2/>

Rugby league cult hero Kyle White dead at 53



Kyle White was a rugby league cult hero.

Image source: Supplied

Staff Writers from News.com.au

March 22nd, 2023 7:33 am

Rugby league cult hero Kyle White has died suddenly at the age of 53.

The former Canterbury, Wests and Illawarra forward passed away in his sleep at his home in Penrith on Monday night.

White also played for Widnes and Workington Town in England throughout a 10-year professional career that saw him gain a cult following.

The popular forward played well above his height and weight in the forward pack and was renowned for being a fierce defender.

White had personal troubles in recent years. In 2019 his brother Josh pleaded for assistance after Kyle had been reported missing. Kyle was later found homeless and wandering around the southeast Queensland town of Warwick.

“It’s with a very heavy heart that I inform everyone that my brother Kyle passed away this morning. As most people know he has been dealing with some issues of late but it doesn’t make it any easier,” Josh posted on Facebook.

“He was my idol growing up and we played at all the same NRL clubs and were inseparable through our younger years. Hopefully he finds peace now and the hurting has stopped.

“He was a tough player on the field and knew how to have a good time off it. We have had a lot of ups and downs over the years but he is my brother and (I) will always love him.”

White played 24 games at Canterbury between 1989 and 1991, and made 34 appearances for the Magpies between 1992 and 1995 and nine for the Steelers in 1996.

White’s death comes days after the passing of South Sydney legend John Sattler aged 80.

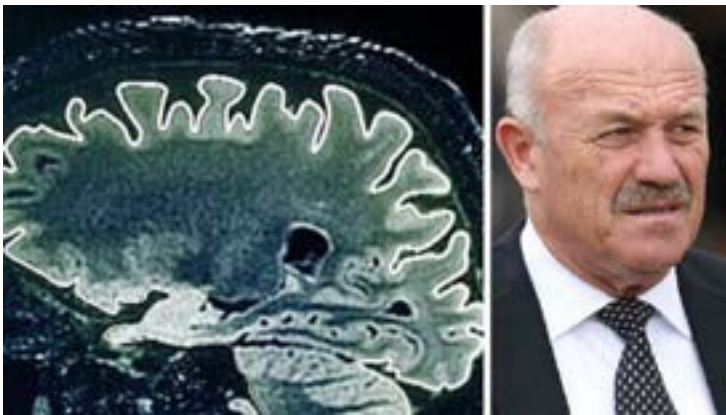
EVERYMIND NOTE:

This article has been reproduced using content from the Fox Sports website, last accessed 30/06/2025.

The original article can be viewed here:

<https://www.foxsports.com.au/nrl/rugby-league-cult-hero-kyle-white-dead-at-53/news-story/a0f7f66e73cb8404f5cae00ac4e9faba>

'It's devastating': The King's diagnosis revealed as ex-players seek 'support'



Rugby league legend Wally Lewis has revealed a devastating diagnosis. Picture: 60 Minutes/News Corp Australia.
Image source: Channel 9.

Samuel Clench from News.com.au

July 31st, 2023 7:22 am

Rugby league legend Wally Lewis is battling a devastating neurodegenerative condition, he revealed in an interview with 60 Minutes on Sunday night.

Lewis, a State of Origin hero for Queensland and former captain of Australia, has been diagnosed with “probable CTE”, which stands for chronic traumatic encephalopathy.

The brain condition, a form of dementia, is triggered by repeated mild traumatic brain injuries, such as those one might suffer from contact to the head in a footy game.

It was first discovered in boxers about a century ago, and has since been studied in connection with contact sports like American football, rugby, rugby league and AFL.

Sitting down with 60 Minutes, Lewis revealed he had been suffering from severe short term memory loss. Illustrating the struggle, he said he was unable to recall exactly what his doctors had told him about the condition, and had to be reminded of its name.

“What’s the diagnosis?” interviewer Tom Steinfort asked him.

“There’s the big one. I can’t even remember the name of what it’s called,” Lewis responded.

“Probable CTE,” his partner, Lynda Adams, offered from off screen.

The condition can affect memory, behaviour and basic cognitive skills, and grows worse over time. It is particularly prevalent in retired sportsmen.

“In one of my first meetings with the doctor, when she asked to repeat simple things – I think she gave me five things, and it might have been something like bus, dog, truck, camera, chair. And she said, ‘Remember those.’ And went over them two or three times,” Lewis recalled.

“A minute later she said, ‘What are the things I asked you to remember?’ And I got two of them. And then sometime later, after that, she said, ‘Do you remember what they were?’ And I think I said ‘bus.’

“Pride’s a wonderful thing, but there wasn’t much of it around then.”

The test he described is similar to the one former US president Donald Trump once bragged about passing, and is designed to assess cognitive function.

Steinfort pointed out that, while Lewis had a reputation for extreme toughness on the field, often it can be just as tough to acknowledge one’s frailties.

“For a lot of the sport guys, I think a lot of us take on this belief that we’ve got to prove how tough we are,” Lewis replied.

“How rugged. And if we put our hands up and seek sympathy, then we’re going to be seen as the real cowards of the game.

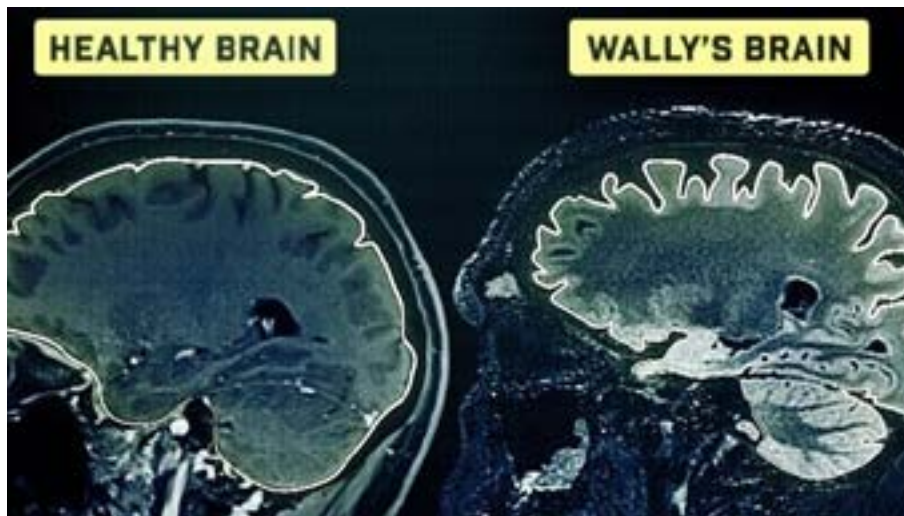
“But we’ve got to take it on and admit that the problems are there.”

While CTE can currently only be diagnosed with complete certainty after the patient’s death, via an autopsy of the brain, Lewis’s neurologist Rowena Mobbs told the program she was “90 per cent” certain of his diagnosis, citing multiple tests and the deterioration of his memory.

One such test, captured by the comparison below, show atypical “valleys” in his brain, which indicate shrinkage and the loss of brain cells.

“It’s devastating,” said Dr Mobbs, who said she was encountering a growing number of former sportspeople with the condition.

“It’s hard to see the players go through it. They’re people I’ve admired and loved growing up, so the last thing I want to do is diagnose them with dementia.”



60 Minutes Wally Lewis story. Picture: 60 Minutes. Image source: Channel 9.

Lewis previously underwent brain surgery after an epilepsy diagnosis. Years later, instances of short term memory loss were the danger sign that grabbed both his and Adams’ attention.

“I remember Wally picked me up, he talked to me about something, and we were driving along, and about three minutes later he said – it was as if he’d never told me – told me the same story,” said Ms Adams, remembering one such incident.

“I said, ‘OK,’ and then about three or five minutes later, he told me the same story.”

Lewis stressed that he didn’t regret his decorated career in the sport.

“Would I change a thing? No, I wouldn’t,” he said.

“I loved the game that I played. I felt privileged to have played it, and to have been given that chance. When you go out there and you’re wearing the representative jerseys, particularly the one for Australia, you feel ten feet tall and bulletproof.

“Well, you might think you are. But you’re not.”

He said players were seeking not “sympathy”, but “support”. As such, he has decided to donate his brain for research upon his death.

In a statement to 60 Minutes, the NRL said it had “some of the most comprehensive head injury policies and procedures” in the sporting world, and argued that its management of head injuries and concussions had “progressed significantly over recent decades”.

EVERYMIND NOTE:

This article has been reproduced using content from the Fox Sports website, last accessed 30/06/2025.

The original article can be viewed here:

<https://www.foxsports.com.au/nrl/nrl-premiership/its-devastating-the-kings-diagnosis-revealed-as-explayers-look-for-support/news-story/912d447a29cc8285f8ebfe8e5f54c764>